

City of Lafayette Historic Salvage Materials Inventory



Door 1
Wooden door with
window, including jamb
32" x 78" (door size)
From 401 E. Geneseo St.



Door 2
Wooden door
30" x 77.5" (door size)
From 401 E. Geneseo St.



Door 3
Wooden door
24" x 77.5" (door size)
From 401 E. Geneseo St.



Door 4
Wooden door,
including jamb
24" x 78.5" (door size)
From 401 E. Geneseo St.



Door 5
Wooden door,
including jamb
30" x 76" (door size)
From 401 E. Geneseo St.



Door 6
Wooden door,
including jamb
30" x 73" (door size)
From 401 E. Geneseo St.

City of Lafayette Historic Salvage Materials Inventory



Window 1
Sash for double hung window
24" x 19"
From 401 E. Geneseo St.
or 305-307 E. Simpson St.



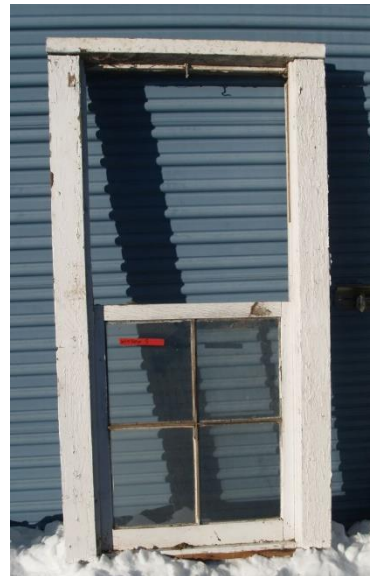
Window 2
Sash for double hung window
24" x 20"
From 401 E. Geneseo St.
or 305-307 E. Simpson St.



Window 3
Double hung window
25.5" x 40.5" (window frame size, not opening size)
From 401 E. Geneseo St.



Window 4
Double hung window
25.5" x 49" (window frame size, not opening size)
From 401 E. Geneseo St.



Window 5
Double hung window, missing one sash
26" x 59" (window frame size, not opening size)
From 401 E. Geneseo St.



Window 6
Double hung window
Window frame width is 53.5". Interior side of frame is 38.5" tall, exterior side of frame is 41" tall (window sill is tilted for drainage).
From 401 E. Geneseo St.

City of Lafayette Historic Salvage Materials Inventory



Window 7
Double hung window,
retrofitted with new
slider hardware
29" x 37.5"
From 401 E. Geneseo St.



Window 8
Double hung window,
retrofitted with new
slider hardware
26" x 57.5"
From 401 E. Geneseo St.



Window Screen 1
24" x 57"
From 305-307 E.
Simpson St.



Window Screen 2
32" x 54"
From 305-307 E.
Simpson St.



Street Signs
Removed from Gough
Ave. during brief
renaming to Couch Ave.
From N. and S. Gough Ave.

Signs
From Lafayette
Professional Building
From 100 W. Cleveland St.



City of Lafayette Historic Salvage Materials Inventory



Wire Fencing

Vintage Victorian style woven fencing
3' x 29' overall. First 14' is intact, then a 2.5'
damaged area. Remaining 12.5' is intact
except for two small 1' damaged areas.
From 501 S. Roosevelt Ave.



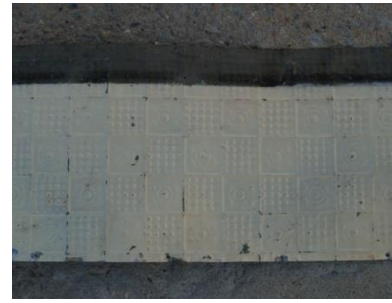
Tin Ceiling Style 1

Embossed tin ceiling, flat pieces,
square pattern
35 pieces 2' x 8'
1 piece 2' x 4'
From 305-307 E. Simpson St.



Tin Ceiling Style 2

Embossed tin ceiling, flat pieces,
ornate pattern
29 pieces 2' x 6'
From 305-307 E. Simpson St.



Tin Ceiling Style 3

Embossed tin ceiling, flat pieces,
square grid pattern
4 pieces 1' x 7'
3 pieces 1' x 3'
From 305-307 E. Simpson St.



City of Lafayette Historic Salvage Materials Inventory



Tin Ceiling Style 4
Embossed tin ceiling, flat pieces,
curve pattern
9 pieces 3' x 17"
From 305-307 E. Simpson St.



Tin Ceiling Style 5
Embossed tin ceiling, cornice
pieces, ornate pattern
7 pieces 4' x 8"
2 pieces 1' x 8"
From 305-307 E. Simpson St.



Tin Ceiling Style 6
Embossed tin ceiling, cornice
pieces, striped pattern
16 pieces 1' x 4'
From 305-307 E. Simpson St.



Tin Ceiling Style 7
Embossed tin ceiling, flat pieces,
ornate pattern
1 piece 2' x 4' edge piece
1 piece 2' x 2' corner piece
From 305-307 E. Simpson St.

